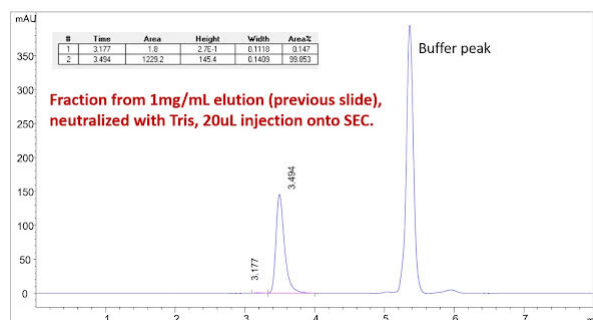

Accelerate your MAbs Screening, Characterization and Purification

- Fast titer determination of monoclonal antibody from CHO Cell media can be achieved within 1.2 minutes by Sepax NEW [Protein A-Sil](#) 2.1 x 50 mm column.
- Protein A mAb elution can be further analyzed by [Unix-C](#) SEC-300 column for aggregation determination.
- Protein A-Sil followed by Unix-C SEC provides fast mAb capture and aggregates analysis within 9 minutes in 2D-LC format. The column workflow is compatible with both UPLC and HPLC.
- High flow rate of Prep [SRT/SRT-C](#) 5 & 10 μ m SEC columns delivers < 20 minutes high speed high resolution mAb purification. The prep SEC columns are compatible with both FPLC and HPLC.

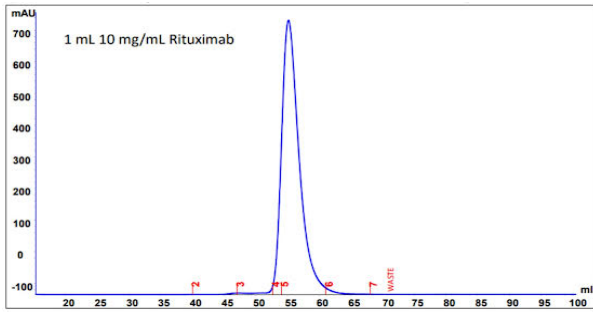
Rapid Aggregates Analysis on Protein A Elution by Unix-C SEC-300



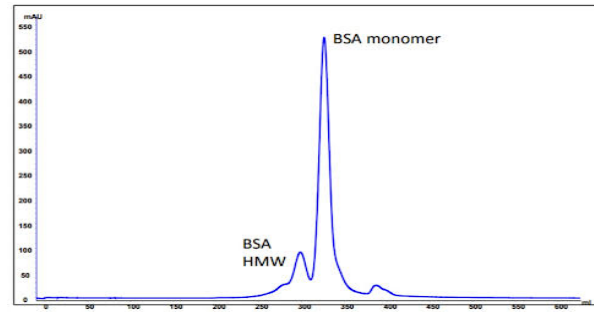
Column: Unix-C SEC-300, 1.8 mm, 300Å, 4.6 x 150 mm (PN: 231300-4615); **Mobile Phase:** 150 mM sodium phosphate buffer, pH 7.0; **Flow rate:** 0.35 mL/min; **System:** UHPLC; **Column Temperature:** Ambient; **Detection:** UV 214 nm; **Sample:** Fraction from 1mg/mL elution (chromatogram on left), neutralized with Tris, 20 μ L injection onto SEC.

<20 Min Fast Rituximab Purification with SRT SEC-300 21.2 x 300 mm

<20 Min High Resolution Purification with SRT-10 SEC-300 50 x 250 mm



Column: SRT SEC-300 (5 μ m, 300Å, 21.2 x 300 mm), P/N: 215300-21230; **Mobile Phase:** sodium phosphate buffer, 150mM, pH7.0; **Flow rate:** 7 mL/min; **System:** Akta pure; **Column Temperature:** 4 °C; **Detection:** UV 280 nm; **Sample:** 1 mL Rituximab 10 mg/mL in 25 mM sodium citrate, 154 mM NaCl, 0.07% tween-80, pH 6.5



Column: Sepax, SRT-10 SEC-300, 10um, 300 A 50 x 250mm (225300-50025); **Mobile Phase:** 150 mM sodium phosphate buffer, pH 7.0; **Flow rate:** 25 mL/min; **System:** Akta pure; **Column Temperature:** Ambient; **Detection:** 280 nm; **Injection Volume:** 10 mL 10 mg/mL BSA in water

To greatly save on purification run time and increase the efficiency while still maintaining good separation with minimal resolution change, choose your fast protein purification prep SEC column using below selection guide

ID	21.2 x 300 mm	30 x 300 mm	50 x 250 mm
Column Volume	105 mL	212 mL	490 mL
V-injection	0.1-4.2 mL	0.2-8.5 mL	0.5-20 mL
Column Loading Guideline (BSA)	≤ 42 mg	≤ 85 mg	≤ 235 mg
Standard Flow Rate (Maximum)	7.5 mL/min (10 mL/min)	15 mL/min (25 mL/min)	41 mL/min (60 mL/min)
Typical Run Time	< 20 min	< 20 min	< 20 min
Column Pressure (at standard flow rate)	< 900 psi < 60 bar < 6 MPa	< 900 psi < 60 bar < 6 MPa	< 900 psi < 60 bar < 6 MPa

[Request a Quote](#)